

## Make a Lasting Contribution

Your Planned Gift to the Laguna Society Will Have a Lasting Impact on our Environment!

Since 1989, The Laguna de Santa Rosa Foundation has been the voice for Sonoma County's most spectacular wetland complex. We conserve, restore and inspire appreciation for the Laguna de Santa Rosa's 254 square mile watershed that encompasses 30,000 acres of internationally recognized fresh water wetlands.

This unique aquatic ecosystem includes several threatened species of flora and fauna found only within this watershed, and over 200 species of birds. Scientists, diverse land owners, farmers and vintners, public agencies, local and migratory wildlife, California residents and visitors from around the country rely on our leadership to ensure a beautiful and healthy Laguna for future generations.

Your gift will help us continue to achieve our goals to:

- » Improve water quality and groundwater resources in the Laguna's 254-square mile watershed.
- » Restore habitat and migration corridors for wildlife.
- » Provide opportunities to explore the Laguna's internationally recognized 30,000-acre Wetlands Complex for locals and visitors.
- » Ensure that the Laguna Remains a place of extraordinary beauty for future generations.
- » Educate and inspire people of all ages to protect the Laguna...Forever.



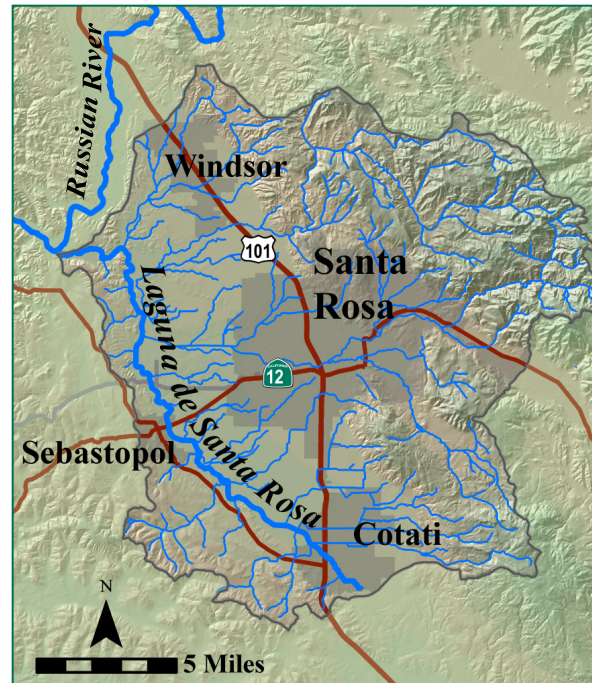
To join the Legacy Society or to find out more about planned gifts, contact Bev Scotland, at extension 106 or email [Bev@lagunafoundation.org](mailto:Bev@lagunafoundation.org).

## What Will Your Legacy Be?

The Laguna Foundation is a 501(c)3 non-profit organization with a mission to restore and conserve the Laguna de Santa Rosa and to inspire appreciation for Sonoma County's Wetland of International Importance.

Join us today by becoming a member of the Laguna Legacy Society and be a part of the vision to ensure that the Laguna and all its inhabitants will thrive and be enjoyed by many future generations.

### Laguna de Santa Rosa Watershed



### Connect

900 Sanford Road, Santa Rosa, CA 95401

Phone: (707) 527-9277

Fax: (707) 527-5075

Email: [info@lagunafoundation.org](mailto:info@lagunafoundation.org)

[www.lagunafoundation.org](http://www.lagunafoundation.org)



Cover photo by Shailer Pickton



## LAGUNA LEGACY SOCIETY

*Planned Gifts to the Laguna de Santa Rosa Foundation*



# The Laguna de Santa Rosa

A Wetland of International Importance and its Place in our Community's Future

The Laguna's wetland complex, habitats and human use are Sonoma County's best and most important opportunity for a natural collaboration: Wetlands, wild animals and people can live and thrive alongside each other. The Laguna de Santa Rosa is a natural legacy for the generations.



Michael Leahy

However, growing human use and development pressure come with a responsibility. For the Laguna to be a healthy, essential resource forever, the Laguna Foundation must also abide and thrive. The Foundation will continue to speak on the Laguna's behalf, restore and steward

the Laguna's health and respectfully open the Laguna's wonders for community enjoyment and learning.

Your bequest or planned gift will help ensure the Laguna Foundation's longevity for this ongoing work - to protect, restore, and learn from the Laguna de Santa Rosa- and to educate the public about the Laguna and its important place in our community's future.

Clean water, healthy soil, restored habitat, and inspired children...

The Laguna Foundation is making a lasting difference in our community!



www.jimneville.com

*"Leave a true legacy for your children and future generations. One sure way is to include the Laguna de Santa Rosa Foundation in your estate plans. I invite you to join me."*

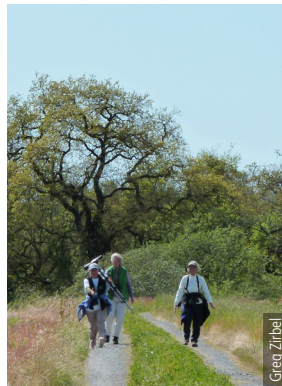
*—Chris Engel, Legacy Society Member*

## Laguna Legacy Society

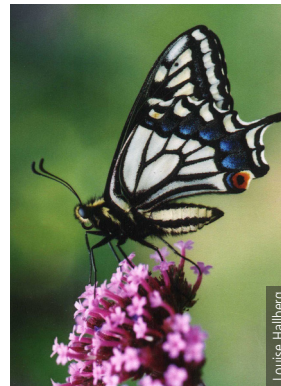
Give Back to Future Generations, Forever

Help ensure the Laguna is a healthy part of our community forever. Please join in providing lasting support for the Laguna Foundation by remembering us in your will, estate plan, of other beneficiary gift. Through any one of these simple and effective methods, you can contribute to the Laguna legacy and make a lasting difference.

If you'll let us know that you have left the Laguna Foundation an endowment and we will provide a dignified attribution, invite you to become a honored member of the Laguna Legacy Society and ask you to join us for exclusive outings and personal behind-the-scenes explorations with our knowledgeable staff.



Greg Zihel



Louise Halberg

There are many ways to plan a gift to the Laguna Foundation. We would be happy to discuss any of these and other options with you confidentially.

## List Us in Your Will or Trust

A charitable bequest is the most common way for individuals to remember the Laguna Foundation in their will or trust. Discuss with your financial advisor about adding an amendment, called a codicil, to your will or living trust. Below is suggested language for your attorney to review and include in your will or trust:



Jerry Dordill

"I give devise and bequeath to the Laguna de Santa Rosa Foundation (Tax I.D.#94-3155180 located in Santa Rosa, California, the sum of \_\_\_ dollars (\$\_\_\_) (or state a percentage of your estate, or describe real or personal property, including the exact location for general purposes, or specify the Laguna de Santa Rosa Foundation program you wish to support)."

## Life Insurance Beneficiary

Leaving the Laguna Foundation as your beneficiary in your insurance policy is a relatively easy way for donors to leave a lasting gift, or for those who are new to endowed philanthropy.



Larry Martin

## IRA or Retirement Plan

IRA or Retirement Plan Beneficiary Designations may be a bit more complex than bequests or life insurance, but have become more popular in recent years.



Ellen Olah

*The Laguna de Santa Rosa Foundation considers your information confidential. We encourage you to discuss your planned gift with your personal financial and tax advisors. The above is for informational purposes only, and not intended to be tax or legal advice.*